

TEAM SNAPSHOT: 1943 Sacramento Solons

©DiamondsintheDusk.com

1943 Sacramento Solons (41-114)

Hitting	Pos.	G	AB	R	H	2B	3B	HR	RBI	SB	AVG
Nippy Jones	2B	129	477	44	145	25	6	4	37	9	.304
Mickey Burnett	SS	145	552	57	152	21	4	6	43	32	.275
Fred Hensley	3B	133	434	35	119	20	5	1	44	0	.274
Pete Petersen	C	98	278	24	75	14	6	5	34	3	.270
Mickey Kavanaugh	OF	141	485	34	129	23	2	1	40	16	.266
Eddie Malone	C	117	359	28	94	18	4	1	28	5	.262
Manny Vias	OF	108	346	38	84	13	3	0	24	6	.243
Bill Ramsey	OF	110	379	44	89	14	2	0	21	28	.235
Jack Angle	1B	148	512	50	115	16	5	3	48	14	.225
Dick Cole	SS	26	76	3	17	0	1	0	0	0	.224
Joe Molina	OF	75	211	12	47	5	0	1	12	1	.223
Jake Suytar	1B	56	168	9	37	3	1	0	10	0	.220
George Jumonville	3B	75	241	20	50	8	0	3	27	3	.207
Dan Phalen	1B	3	6	0	1	0	0	0	1	0	.167
Ken Penner	P	3	1	-	1	0	0	0	0	0	1.000
Bud Byerly	P	46	109	5	30	6	0	0	5	0	.275
Jean-Pierre Roy	P	27	59	3	15	1	0	0	3	0	.254
Al Brazle	P	23	60	4	15	2	2	0	2	0	.250
Paul Fitzke	P	23	18	1	3	0	0	0	0	0	.167
Steve LeGault	P	13	23	-	3	0	0	0	0	0	.130
Clyde Fischer	P	14	8	-	1	0	0	0	0	0	.125
James McFaden	P	15	8	-	1	0	0	0	0	0	.125
Clem Dreisewerd	P	42	74	6	9	0	0	0	3	0	.122
John Pintar	P	42	68	2	6	0	0	0	2	0	.088
Harry Polly	P	11	18	-	1	0	0	0	0	0	.056
Herman Pillette	P	28	4	0	0	0	0	0	0	0	.000

Pitching	W-L	G	GS	CG	SHO	IP	H	ER	BB	SO	ERA
Al Brazle	11-8	22	19	14	3	160	131	30	60	69	1.69
Steve LeGault	3-6	12	7	6	1	69	57	17	29	20	2.22
Bud Byerly	9-21	34	31	26	2	246	219	68	91	98	2.49
Clem Dreisewerd	9-20	42	31	16	5	236	287	102	37	65	3.89
Harry Polly	1-7	10	8	1	0	58	71	29	22	21	4.50
John Pintar	5-27	42	30	13	2	221	271	115	57	63	4.68
Jean-Pierre Roy	1-8	12	9	6	0	73	84	39	44	29	4.81
Paul Fitzke	0-8	23	8	3	0	70	98	43	26	9	5.53
Herman Pillette	2-3	28	1	0	0	41	47	26	13	7	5.71
Ken Penner	0-0	3	0	0	0	3	2	2	2	2	6.00
Escal Burnett	0-2	2	2	2	0	12	11	-	8	2	---
Clyde Fischer	0-1	13	4	0	0	30	39	-	18	7	---
George Jumonville	0-2	5	3	1	0	26	29	-	16	3	---
Eddie Malone	0-0	2	0	0	0	7	6	-	6	0	---
Jim McFaden	0-1	15	3	0	0	35	57	-	20	5	---

1943 Pacific Coast League

Los Angeles Angels.....	110-45	---
San Francisco Seals.....	89-66	21
Seattle Rainiers.....	85-70	25
Portland Beavers.....	79-76	31
Hollywood Stars.....	73-82	37
Oakland Oaks.....	73-82	37
San Diego Padres.....	70-85	40
Sacramento Solons.....	41-114	69

Playoffs: Seattle d. Los Angeles 4 games to none; San Francisco d. Portland 4-2.
Finals: San Francisco d. Seattle 4-2.

Starting outfielder Bill Ramsey is able to join the team in early June only after he fails his Army physical in Arkansas.

The team's relief ace is 47-year-old Herman "Old Folks" Pillette who finishes 2-3 with a 5.71 ERA in 28 appearances.

Sixteen-year-old pitcher Jim McFaden is 0-1 in 15 games when he leaves the team in early September to finish his high school degree.

Page 1 of 2:

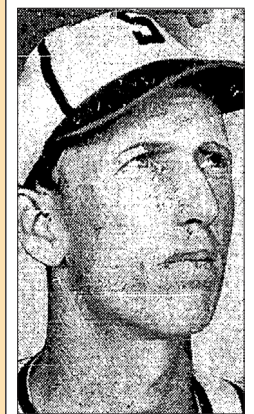
"From Riches to Rags"

After winning the 1942 Pacific Coast League crown on the final day of the season, the Sacramento Solons fall to last place in 1943, finishing 41-114 (.265) and 69 games behind champion Los Angeles and 29 games behind the seventh-place Padres of San Diego.

Sacramento's winning percentage of .265 is the worst in Pacific Coast League history.

The team's best pitcher, left-hander Al Brazle, is 11-8 and leading the PCL in ERA (1.69) when the Cardinals call him up on July 13, to replace pitcher Howie Pollet who has entered the Army. Brazle is responsible for 11 of the team's 29 victories at the time of his departure.

The hapless Solons feature not one, not two, but three 20-game losers in John Pintar (5-27), Bud Byerly (9-21) and Clem Dreisewerd (9-20).



Al Brazle

Solons Have Only Six Veterans Left

SACRAMENTO, March 22.—(UP)—The Sacramento Solons, 1942 Pacific Coast League pennant winners, will present a "riches to rags" picture this season — what with the draft, essential industries and the other wartime complications.

President Phil Bartelme sums up the team's prospects for a repeat championship in three words: "Not a chance."

As Manager Ken Penner calls the roll at Cardinal Field for the start of spring training today, only six regulars from last year's team answered.

The six are Pitchers Gene Lillard, John Pintar and Henry Polly, Second Baseman Gene Handley, Outfielder Escal Burnette and Melvin Serafini, Utility infielder.

Among the missing will be Henry Schmiel, outfielder; Tony Freitas, pitcher; Bill Schmidt, pitcher; Herschel Lyons, pitcher; Frank Nelson, pitcher; and Averett Thompson outfielder, all of whom have gone to work for Uncle Sam.

Players sold since last season include:

Eddie Lake, shortstop, Boston Red Sox; Steve Messner, third baseman, Cincinnati; Ray Mueller, catcher, Cincinnati; Buster Adams, outfielder, St. Louis Cardinals; Blix Donnelly, pitcher, Cardinals; Paul Dean, pitcher (on option to Houston last season) to the St. Louis Browns; Jack Sturdy, first baseman, Rochester; and Manager Pepper Martin, also to Rochester.

1943 Sacramento Solons [2 of 2]:

The average attendance for a Solons' home game in 21-year-old Moreing Field is a dismal 409 per game.

The Pacific Coast League

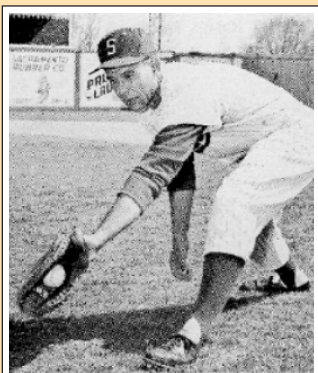
One of only nine minor leagues to finish the 1943 season (10 started the season), a full 2/3rds of the PCL's starters from 1942 do not return in 1943. Eighteen PCL players 38 years or older play key roles for league teams and for a second-straight year wartime restrictions prevents the league from playing night games.

The Cardinals Strike

In anticipation of lower attendance totals as a result of the night game restrictions, first-year St. Louis Cardinals general manager Sam Breadon (replacing Branch Rickey who left for the Brooklyn Dodgers in October) cuts expenses "to the bone" and strips the team of almost of all its talent while strengthening other Cardinal farm clubs in Rochester and Columbus.

Missing almost all of their players from the 1942 championship team, including their manager Pepper Martin, the Solons don't return a starter or a front line pitcher from the previous season. The 1942 PCL Player of the Year Ray Mueller is sold to Cincinnati. Infielders Mel Sarafini and Gene Handley decide to keep their off-season war jobs while pitcher Larry Kempe leaves for a job with the railroad. Deb Garms and Buster Adams are sold to St. Louis while 24-game winner Tony Freitas is among several Solons who elects to join the armed forces.

Sacramento opens the 1943 season on April 18, with a 5-2 loss to the Portland Beavers at Cardinal Field, with the unfortunate John Pintar allowing 14 hits en route to the first of his eventual league-high 27 losses. The good news is that the Solons draws a respectable 5,922 for opening day, the bad news is that they will draw only 25,000 for the remainder of the season.



"Nippy" Jones

The Solons

Starting outfielder Bill "Square Jaw" Ramsey is able to join the team in early June *only after he fails his military physical*. Ramsey hits .238 and finishes second on the team with 28 steals

Alpha (Al) Brazle pitches a PCL-record 40 consecutive scoreless innings and leads the team in wins (11) and ERA (1.69) when he sold to the Cardinals on July 14. At the time of his purchase by the Redbirds, the lefty had accounted for 38 percent of the Solons' wins (11-of-29).

The team's leading home run hitter with six, is 24-year-old shortstop Ora (Mickey) Burnett, already in his seventh minor league season. Only nine PCL players will reach double figures in home runs in 1943.

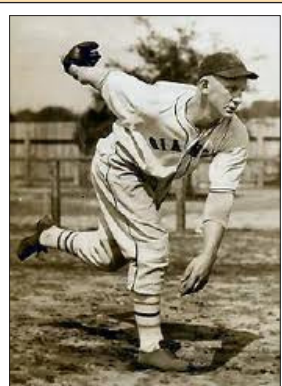
Signed straight out of high school, 18-year-old second baseman Vernal Leroy "Nippy" Jones leads the Solons in hitting with a .304 average. Jones leaves baseball for two years (1944-1945) serving in the United States Marine Corps during World War II. Jones is the only teenager among PCL hitting leaders in 1943.

The Solons pitching staff features three 20-game losers - Eldred "Bud" Byerly (9-21), Clem Dreisewerd (9-20), and John Pintar (5-27). Both Byerly and Dreisewerd will join Brazle in the major leagues; Byerly with the Cardinals at the end of the 1943 season and Dreisewerd, after 10 years in the minors, with the Boston Red Sox in 1944.

At the tender age of 47, Herm Pillette is the Solons' relief ace, making a team-high 27 relief appearances. Pillette spends 23 of his 29 years as a pro in the PCL and holds the league's record for games pitched (704).



Cardinal Field is the home of the 1943 Sacramento Solons ... built in 1922 and named Moreing Field (after owner Lew Moreing) ... on June 10, 1930, the first night game in the Pacific Coast League is played in Moreing Park between the Sacramento Senators and the Oakland Oaks ... renamed Cardinal Field in 1935, Doubleday Field in 1944 and finally Edmonds Field in 1945.



Clem Dreisewerd