

Earl Huckleberry & Ray Phelps "BEYOND THE SCOREBOOK"

©DiamondsintheDusk.com

On September 13, 1935, Earl Huckleberry makes his major league debut for the Philadelphia Athletics in a Friday afternoon game against the Chicago White Sox at venerable Shibe Park. Pitching into the sixth inning with a 12-1 lead, Huckleberry eventually tires but is awarded the win despite yielding seven earned runs on eight hits (including a sixth inning home run by right-fielder George Washington) and four walks.

What makes the Konawa, Oklahoma, native's debut significant isn't that he was the 19th pitcher to toil for Connie Mack's last-place Athletics that season, but that his entire professional baseball career consists of a single afternoon. Although scheduled to start against Cleveland in a doubleheader five days later, the 25-year-old right-hander does not take to the mound in organized baseball again, opting to return to the semipro playing fields in his native Oklahoma.

Huckleberry Proves No Pie for White Sox

PHILADELPHIA, Sept. 13.

—The Athletics, scoring eight runs in the first inning when Babe Phelps issued six bases on balls, took their third straight from the Chicago White Sox today, 19 to 7.

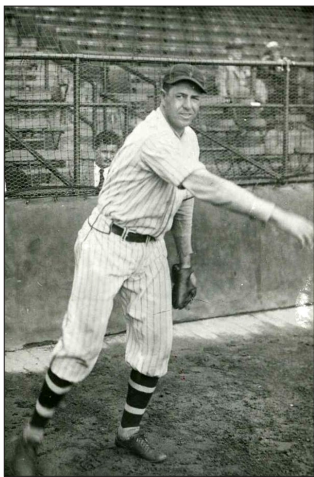
Earle Huckleberry, right hander from the semi-pro lots of Oklahoma, making his big league debut, was credited with the triumph, but had to be relieved in the seventh inning.

PHILA.	A	H	O	A	CHICAGO.	A	H	O	A
Warstler.2	4	2	0	1	Radcliff.1f	4	1	2	0
Newsome.2	1	0	2	0	Haas.cf...	4	1	1	0
Cramer.cf.	4	4	5	0	Piet.2...	2	1	1	4
Finney.rf.	5	1	5	0	Hayes.2...	1	0	1	2
Foxx.1...	3	2	4	1	Bonura.1.	5	1	7	0
Higgins.3.	4	2	1	0	Appling.s.	5	2	2	1
Johnson.1f	6	3	3	0	Wash'tn.rf	3	1	1	0
McNair.s.	4	2	2	1	Hopkins.3.	3	0	2	0
Berry.c...	5	3	4	0	Grube.c...	1	0	1	0
Huckl'ry.p	3	0	1	1	Phelps.p...	2	0	0	1
Lieber.p...	1	0	0	0	Salveson.p	2	0	0	1
					Chelini.p.	2	1	0	1
Totals.	40	19	27	4					

Philadelphia	...	8	0	2	1	1	2	3	2	x	19
Chicago	1	0	0	4	2	0	0	—	7	

Runs—Warstler 3, Cramer 3, Foxx 3, Higgins 2, Johnson 3, McNair 2, Berry 2, Huckleberry, Radcliff, Haas, Piet, Bonura, Appling, Washington, Chelini. Error—Huckleberry.

Runs batted in—Bonura, Appling 3, Washington 2, Haas, Higgins 3, Johnson 4, Berry 4, Warstler 2, Cramer 3, Finney, McNair, Foxx. Two-base hits—Cramer, Bonura, Foxx. Home runs—Johnson, Washington, Berry. Sacrifices—Piet, Finney. Double play—Appling, Hayes and Bonura. Left on bases—Chicago 1, Philadelphia 8. Bases on balls—Off Phelps 6, off Salveson 1, off Chelini 2, off Huckleberry 4, off Lieber 2. Struck out—By Salveson 2, by Huckleberry 2, by Lieber 1. Hits—Off Phelps, 1 in ½ inning; off Salveson, 11 in 4½ innings; off Chelini, 7 in 3 innings; off Huckleberry, 8 in 6½ innings; off Lieber, none in 2½ innings. Hit by pitcher—By Chelini (Cramer). Winning pitcher—Huckleberry. Losing pitcher—Phelps. Umpires—Marberry, Summers and McGowan. Time—2:17.



Ray Phelps
1930 Brooklyn Dodgers



Earl Huckleberry
1935 Philadelphia Athletics

Where Huckleberry is unique in the fact that he does not play in the minors before or after his lone major league appearance, his mound opponent that afternoon, 31-year-old veteran right-hander Ray Phelps, is making the 403rd appearance of his professional baseball career, including 108 in the major leagues.

Pitching for the Semi-nole (Okla.) Redmen,

Huckleberry and teammate Vallie Eaves, a Native American hurler, are signed to major league contracts by Athletics' scout Ira Thomas and sent by train to join the team in Philadelphia. Eaves makes his debut a day before Huckleberry (September 12), allowing Chicago only seven hits in a 4-3 complete game victory.

Following his one game major league career, Huckleberry elects to return home to Oklahoma and toils for at least another seven seasons for various semipro teams. Eaves decides to stick around and pitches parts of four seasons in the majors, compiling a 4-8 record with a 4.58 ERA. The Rosedale, Oklahoma right-hander enjoys a lengthy career, pitching in the minor leagues until 1957, appearing in 537 games, posting a 227-172 mark.

A product of Dunlap, Tennessee, Phelps pitches in professional baseball for 16 seasons from 1924 to 1940. Phelps plays in parts of five seasons in the major leagues with Brooklyn (1930-32) and the Chicago White Sox (1935-36), compiling a 33-35 mark with a 4.93 ERA.

Phelps has a notable major league debut with the Brooklyn Robins in 1930, finishing with a 14-7 mark and 11 complete games. In 12 minor league seasons, Phelps has nine double-digit win seasons, including a pair of 20-win campaigns. In 1926, with the High Point Pointers of the Piedmont (C) League, Phelps fashions a career-best 27-8 mark with a league-high 151 strikeouts.